

May 2011

urban gravesham

The Civic Society for Gravesend & Northfleet

# newsletter

member of:



## WELCOME

### to our new members

Urban Gravesham continues to grow. Over the last few months we have had many new members - welcome to you all and welcome to our campaigns.



**web:** [www.urbangravesham.org](http://www.urbangravesham.org) **email:** [info.urbangravesham.org](mailto:info.urbangravesham.org) **Tel:** 01474 566701

# GRAVESEND NEEDS YOU! THE FINAL FIGHT TO SAVE OUR TOWN

**Date for Planning Inquiry to decide the future of the Heritage Quarter set for Tuesday 6<sup>th</sup> – Friday 16<sup>th</sup> September**

## Heritage Quarter still under threat. The Edinburgh House Appeal



The dates for the Public Inquiry to hear the appeal of developers Edinburgh House against Gravesham Council's rejection of the massive Heritage Quarter planning application have now been set.

The arguments for and against the scheme will now be put to a Government Inspector at a Public Inquiry to be held between Tuesday 6<sup>th</sup> and Friday 16<sup>th</sup> of September 2011. The venue has yet to be decided but is likely to be in central Gravesend.

### Urban Gravesham to play major role

The Government has decided that Urban Gravesham should have the same rights as the Council and Edinburgh House. This means that it will be able to cross-examine developers Edinburgh House at the Inquiry. Urban Gravesham will also have the right to call its own witnesses to speak against the scheme.

For a group of ordinary people to be given these rights shows that the Government has already been impressed by the strong campaign against the scheme. With your help we can persuade the Government to reject this terrible threat to our town - once and for all.

The major role to be played at the Inquiry by Urban Gravesham means that legal representation is essential. We have therefore formally instructed Jonathan Clay, Chairman of Urban Gravesham, to act as our Barrister.

### Secretary of State will make the final decision

In a highly unusual move, the Secretary of State, Caroline Spelman, has decided to 'recover the appeal for her own determination'. This means that she will not leave the final decision for civil servants, but will make the final decision herself. This reinforces Urban Gravesham's view that the historic town centre of Gravesend is of huge importance.

### What you can do to help

- We need witnesses to speak at the Inquiry. It is important that residents are prepared to speak up and tell the Government Inspector what Gravesend means to them and why they believe the scheme is wrong for our town. If you are willing to consider doing this, then please contact us as soon as possible by e-mailing our website or phone: **01474 566701** or **07948 214 802**. Alternatively you can register as a witness by attending the first day of the Inquiry at 10.00 am
- If you do not wish to be a witness then come along to the Public Inquiry as an observer, and get your friends, neighbours & family to join you, even for a few hours - it is important that as many people as possible come along each day to show the Inspector that the citizens of Gravesend really do care about their town.
- We have some planning expertise available to us - but there is a huge amount of work to be done to prepare for the Inquiry. Further professional advice is always welcome. If you know anyone who could help - please get in touch.
- Donate to our fighting fund. We need money for printing leaflets, and for copying the 1000's of documents for the public inquiry.
- Help distribute leaflets in your street or area
- Last, but not least - encourage your friends and family to join Urban Gravesham - Membership is only £5

Please turn over;

# GRAVESEND NEEDS YOU! THE FINAL FIGHT TO SAVE OUR TOWN

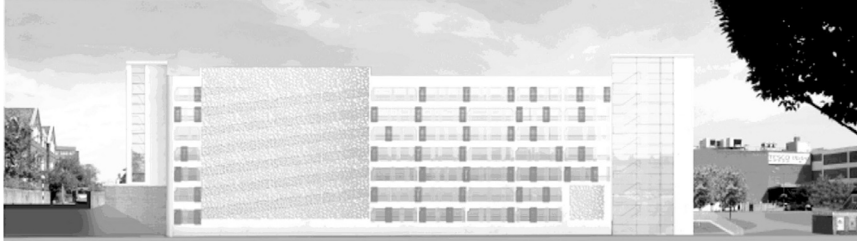
Contact [info@urbangravesham.org](mailto:info@urbangravesham.org) or **01474 566701** to find out what you can do to help at the Inquiry: All volunteers welcome - The views of ordinary people really do count.



## TRANSPORT QUARTER - Phase 2

PROPOSALS FOR A MULTI-STOREY CAR PARK ADJACENT TO THE SOMERSET ARMS

Planning ref 2011/0246



*Victoria Centre on left. View from Darnely Road Area*



*View from Rathmore Road*

People will have noted all the work taking place round the Civic Centre. This is the first phase of Gravesend's Transport Quarter - the aim being to provide a traffic free 'Civic Square'.

**Less welcome is the proposed 2<sup>nd</sup> phase which would see an expanded bus station between the Railway Station and the Somerset Arms, together with a very large (6/7 storey) car park. Historic buildings on Darnley Road would also be demolished.**

The Urban Gravesham Committee thinks that the loss of historic buildings is unnecessary and that the multi-storey car park is over-scaled and a huge mistake. If you agree, it is important that you write a letter of objection now to:



*View from Clive Road*

Clive Gilbert, Development Control Manager, Gravesham Borough Council, Windmill Street, Gravesend DA12 1AU  
Copy your letter to our MP, Adam Holloway, House of Commons, London SW1A 0AA

## QUIZ NIGHT Thanks to all those who attended Saturday 26<sup>th</sup> February 2011

Urban Gravesham had a very successful quiz night at the Veterans Hall on 26<sup>th</sup> February. This was well attended and raised over £300 for our funds. We will be holding more quiz nights - please consider coming along - it's an enjoyable way of meeting like-minded people and at the same time helping a really worthwhile cause.



### SOME GOOD NEWS: restored Town Hall now open

After many months of refurbishment The Town Hall is now officially open for business. At the heart of the new complex is a magnificent hall suitable for Weddings, Birthdays and - Gravesham Borough Council, please note, Public Inquiries! A restaurant, 'Barbutis', serves modern British Cuisine. Despite its unusual location within the former police cells, it really is a very attractive venue.

### PROSPECTIVE COUNCILLORS - will they save Gravesend's Heritage Quarter from mass development?

Urban Gravesham has sent a questionnaire to all election candidates to ask their position with regard to the Heritage Quarter. We will collate and publicise their replies as soon as possible.

In the meantime you might choose to ask the candidates for your ward about the Heritage Quarter.

[www.urbangravesham.org](http://www.urbangravesham.org)

**YES to sympathetic regeneration**